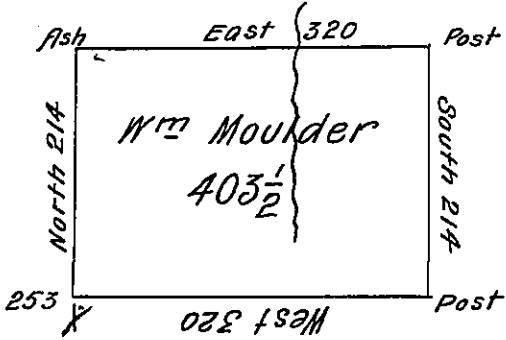


James Duncan Esq.

Wm Duncan



Patty Moulder

State line

Situate on the Waters of Lake Erie in Allegheny County District

No 1. Survey'd 7 June 1794 to William Moulder on his Warrant dated 13 April 1792. Containing four hundred three acres an half & allow^e

Thos Rees D.S.

Dan: Brodhead Esq

Surv: Genl

IN TESTIMONY that the above is a copy of the original remaining on file in the Department of Internal Affairs of Pennsylvania, made conformably to an Act of Assembly approved the 16th day of February, 1833, I have hereunto set my Hand and caused the Seal of said Department to be affixed at Harrisburg, this first day of December 1905.

Grace B. Brown
Secretary of Internal Affairs.